

6. DIMENSIONS :

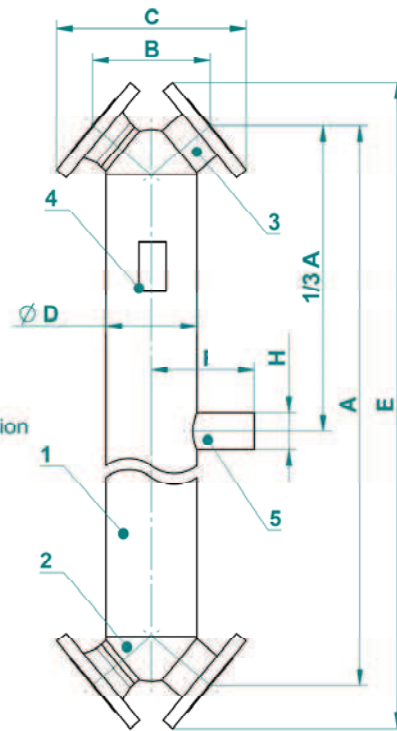
(also 5th connect. model)

Note :

- The flanges according to EN 1092-1 200
- 5th conn. – select by chosen types

Legenda:

- 1 - Shell
- 2 - Hemispherical head
- 3 - Connection
- 4 - Name plate
- 5 - Connection of Circulation



Basic dimensions :

Type HE	A [mm]	B [mm]	C [mm]	D [mm]	E [mm]	F [mm]	K [mm]	H * [inch]	Dimension of flanges	
									flanges	Ext.th read
JAD X (K) 2.11.08.68	835	160	251	80	942	-	-	-	DN40, PN40	1 1/2"
JAD X (K) 2.11	1513	160	251	80	1620	144	581	G1"	DN40, PN40	1 1/2"
JAD X (K) 3.18.08.75	917	172	272	101,6	1037	-	-	-	DN50, PN40	2"
JAD X (K) 3.18	1510	172	272	101,6	1630	151	585	G1"	DN50, PN40	2"
JAD X (K) 5.38.08.71	908	204	320	139,7	1047	-	-	-	DN65, PN40	2 1/2"
JAD X (K) 5.38	1510	204	320	139,7	1649	170	537	G1 1/2"	DN65, PN40	2 1/2"
JAD X (K) 6.50.08.72	907	206	323	159	1068	-	-	-	DN80, PN40	3"
JAD X (K) 6.50	1492	206	323	159	1653	180	538	G2"	DN80, PN40	3"
JAD X (K) 6.50.10	1492	206	323	159	1653	180	538	G2"	DN80, PN40	3"
JAD X (K) 9.88.08.65	886/903	263 ⁽¹⁾	416	219	1050	-	-	-	DN100, PN40	4"
JAD X (K) 9.88.08.85	1086/1103	263 ⁽¹⁾	416	219	1250	-	-	-	DN100, PN40	4"
JAD X (K) 9.88	1481/1498	263 ⁽¹⁾	416	219	1676	229	494	G2"	DN100, PN40	4"
JAD X (K) 9.88.10	1481/1498	263 ⁽¹⁾	416	219	1676	229	494	G2"	DN100, PN40	4"
JAD X (K) 9.88.12	1481/1498	263 ⁽¹⁾	416	219	1676	229	494	G2"	DN100, PN40	4"
JAD X (K) 12.114.08.50**	781	340	501	273	935	-	-	-	DN125, PN40	4"
JAD X (K) 12.114.08.60**	881	340	501	273	1053	-	-	-	DN125, PN40	4"
JAD X (K) 12.114.08.75**	1031	340	501	273	1203	-	-	-	DN125, PN40	4"
JAD X (K) 12.114**	1681	340	501	273	1900	256	565	G2"	DN125, PN40	4"
JAD X (K) 12.114.10**	1681	340	501	273	1900	256	565	G2"	DN125, PN40	4"
JAD X (K) 12.114.12**	1681	340	501	273	1900	256	565	G2"	DN125, PN40	4"
JAD X (K) 12.114	1678	340	491,6	273	1897	256	565	G2"	DN125, PN40	-
S0 X (K)	911	204	300	273	1026	-	-	-	DN40, PN40	1 1/2"
S1 X (K)	993	206	302	139,7	1108	-	-	-	DN40, PN40	1 1/2"

Note : * internal thread,** DN 100 (custom made), ⁽¹⁾ model FF 253 mm